
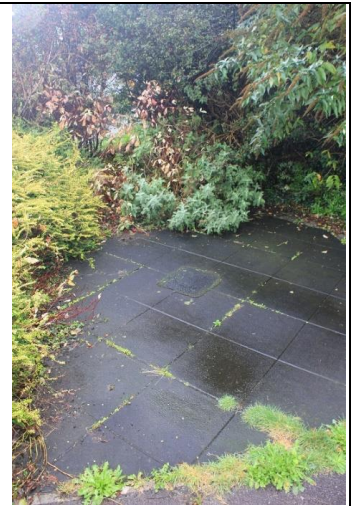


Asset Management Group Briefing Document

	Comment
Site name and address	Sycamore Road Play Area, Latchbrook, Saltash, PL12 4XU
UPRN	16861
Directorate	Environment
Property Description	The former play area measures 249 sq m which includes a section of road. All the play equipment has been removed or decommissioned. The surfacing is mostly at end of it life and slippery and there is constant dog fouling & littering on land. Vegetation & shrub growth regularly encroaches footway and private property requiring reactive cutting. Instructions issued to cut back vegetation to CC land and maintained verge to other side of footpath.
Planning position	Public Open Space. Tiny enclosed, low-value spaces are discouraged by Cornwall Local Plan policy 12.3 and adopted Open Space Strategy identifies consolidation in area. Application for change of use would be required for sale for garden use etc.
Plan Insert or attach	

Photograph
Insert or attach



Recommendation	Follow standard asset release process, with a view to disposing on the open market if there are no internal interest.
----------------	---

Case Officer	Stuart Wallace, Public Space Officer
--------------	--------------------------------------

Date prepared	06/04/23
---------------	----------